

LTPA - Lyon Town Planning Agency

What is LTPA ?

Who do we work with ?

Who we are ?

What do we do ?



1- The networks of Urban Town planning Agencies

2- Lyon Town planning Agency

3- The territories of study

4- The activities of LTPA

- Master plan and Local plans
- Urban Project / Urban Quality / Public Spaces
- Observation
- International activities
- Knowledge and Innovation



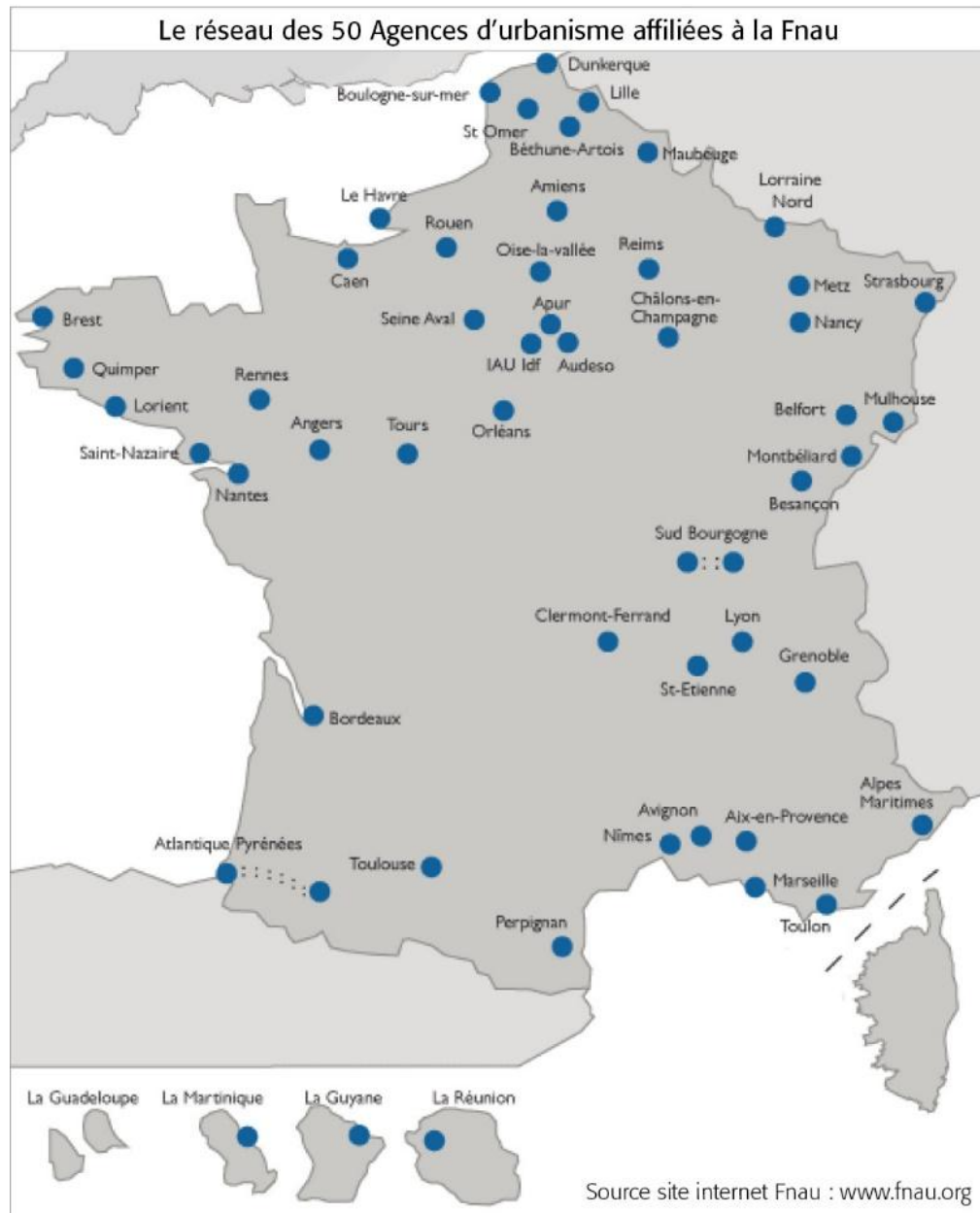
Réseaux d'agences d'urbanisme dans les nouvelles régions en 2017

Coopération inter-agences

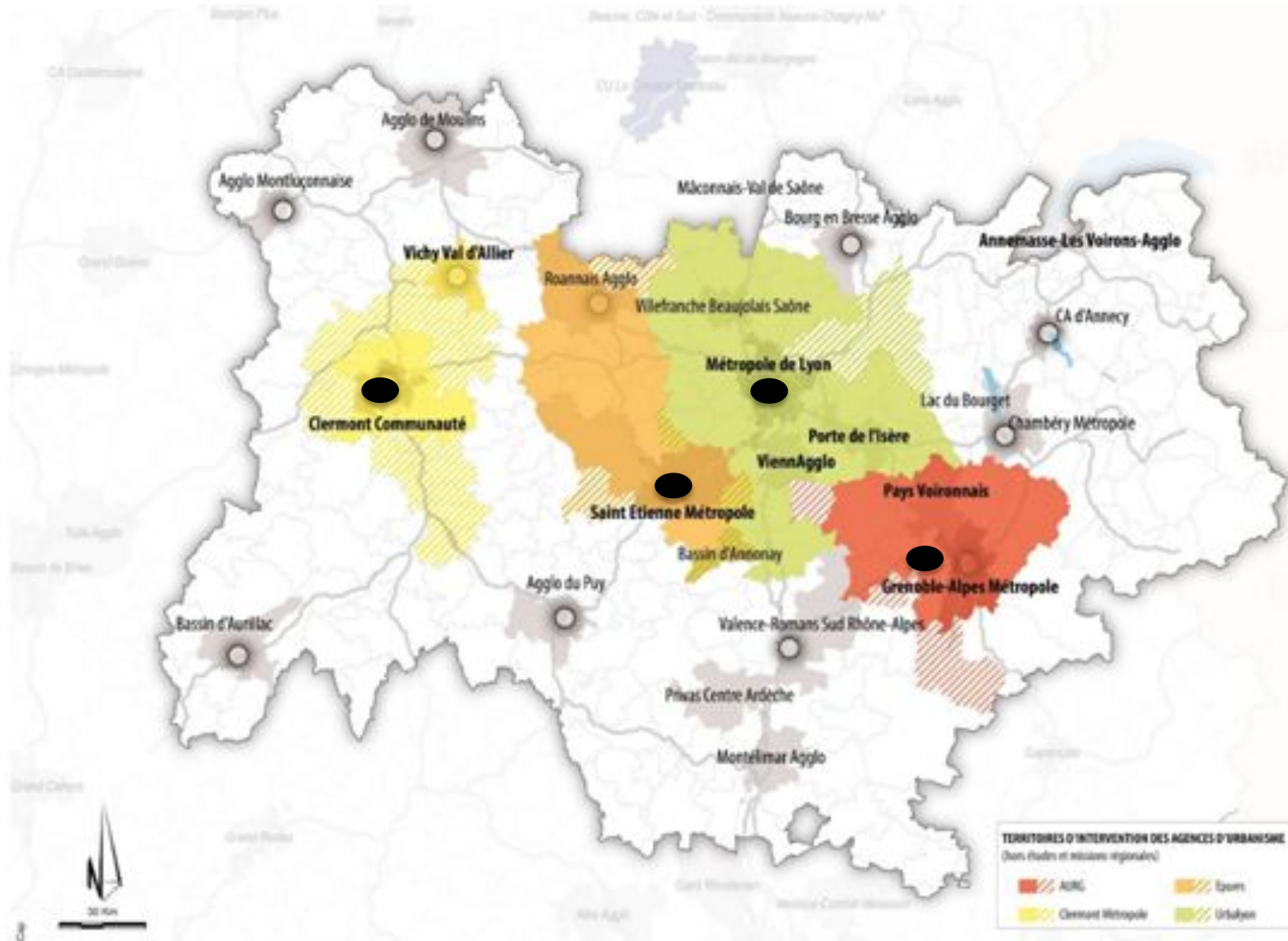
-  Réseaux d'agences
-  Agences multipolaires



Le réseau des 50 Agences d'urbanisme affiliées à la Fnau



Lyon, Grenoble, Saint-Etienne and Clermont-Ferrand 4 Town Planning Agencies in Auvergne-Rhône-Alpes



1- The networks of Urban Town planning Agencies

2- Lyon Town planning Agency

3- The territories of study

4- The activities of LTPA

- Master plan and Local plans
- Urban Project / Urban Quality / Public Spaces
- Observation
- International activities
- Knowledge and Innovation



Lyon town Planning Agency

A tool of engineering in the public interest whose activities contribute to plan and develop Lyon metropole area and its surroundings

A partnership-based governance with 40 partners dedicated to the public interest

Main partners :

- Metropole of Lyon (main partner)
- State
- Lyon City Council, Villeurbanne City council, Venissieux City Council
- The Authority of Transport : SYTRAL
- Lyon Economic chamber (public company in charge to bring together economic actors, which contributes to the territory development)
- Other Town Communities at the periphery and local authorities : gathering of town city councils and municipalities
- Social housing Actors ...

A 85 persons team offering varied skills

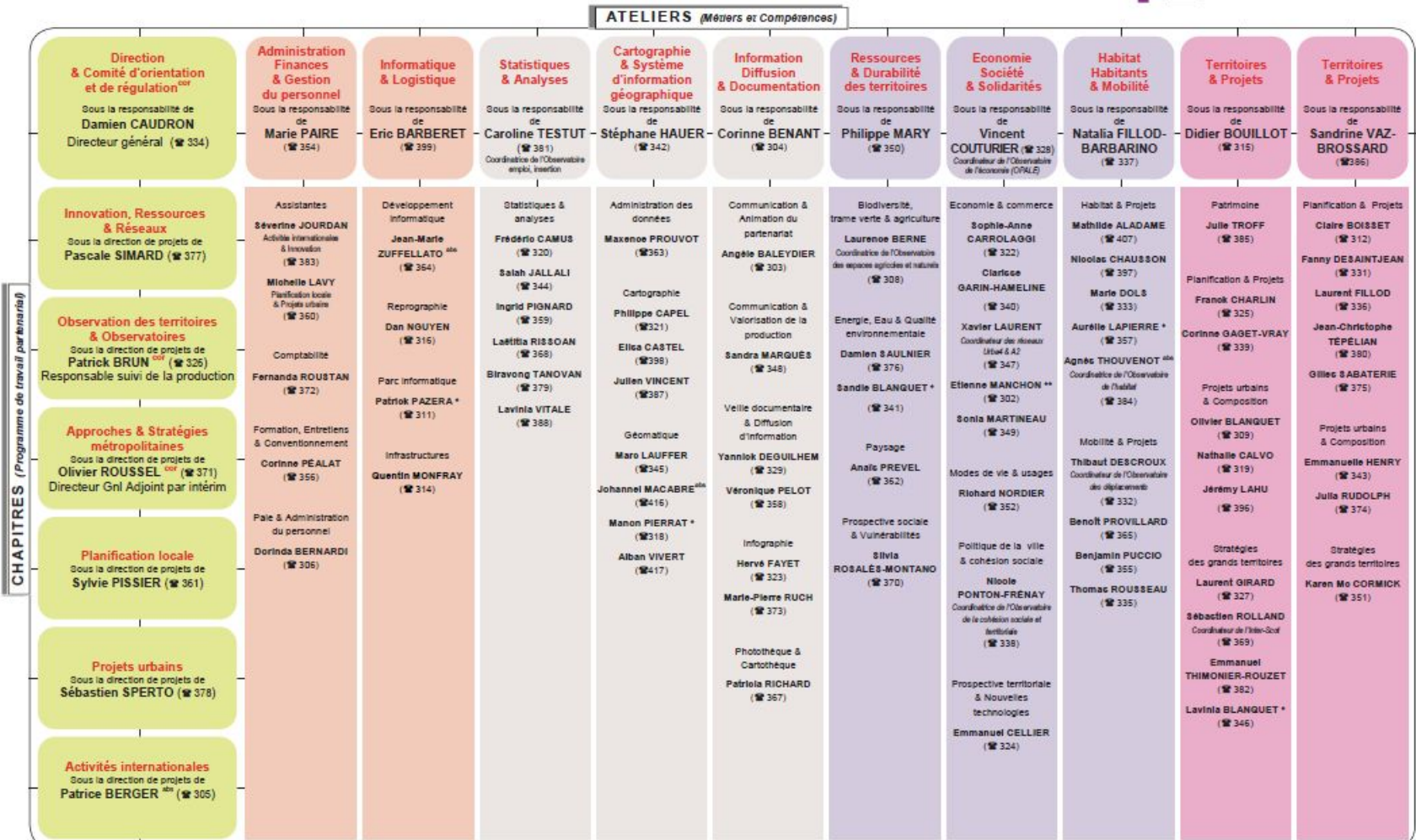
Urban planner, urban designer, architects, engineers, geographers, GIS specialists, map specialists, economists, sociologist, statisticians, ...

Working on multiple themes : local and strategic Planning, Housing, Transport and Mobility, Environment, Heritage, Economic studies, Quality of life, Landscape, climate adaptation ...

Working at different scales : from the building in the streets, to the city and wide landscape



Organization of



Update : 1st March 2018

1- The networks of Urban Town planning Agencies

2- Lyon Town planning Agency

3- The territories of study

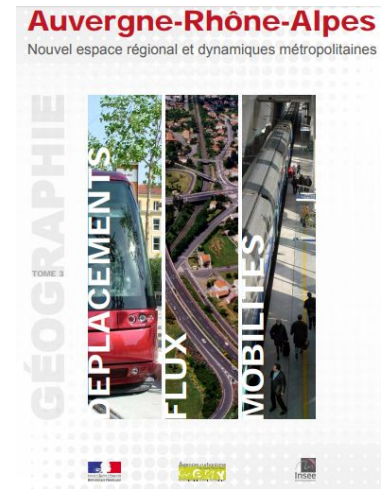
4- The activities of LTPA

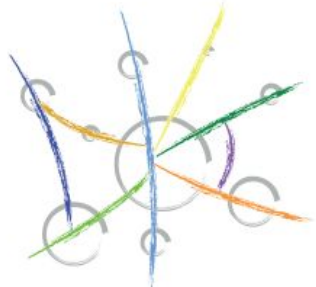
- Master plan and Local plans
- Urban Project / Urban Quality / Public Spaces
- Observation
- International activities
- Knowledge and Innovation



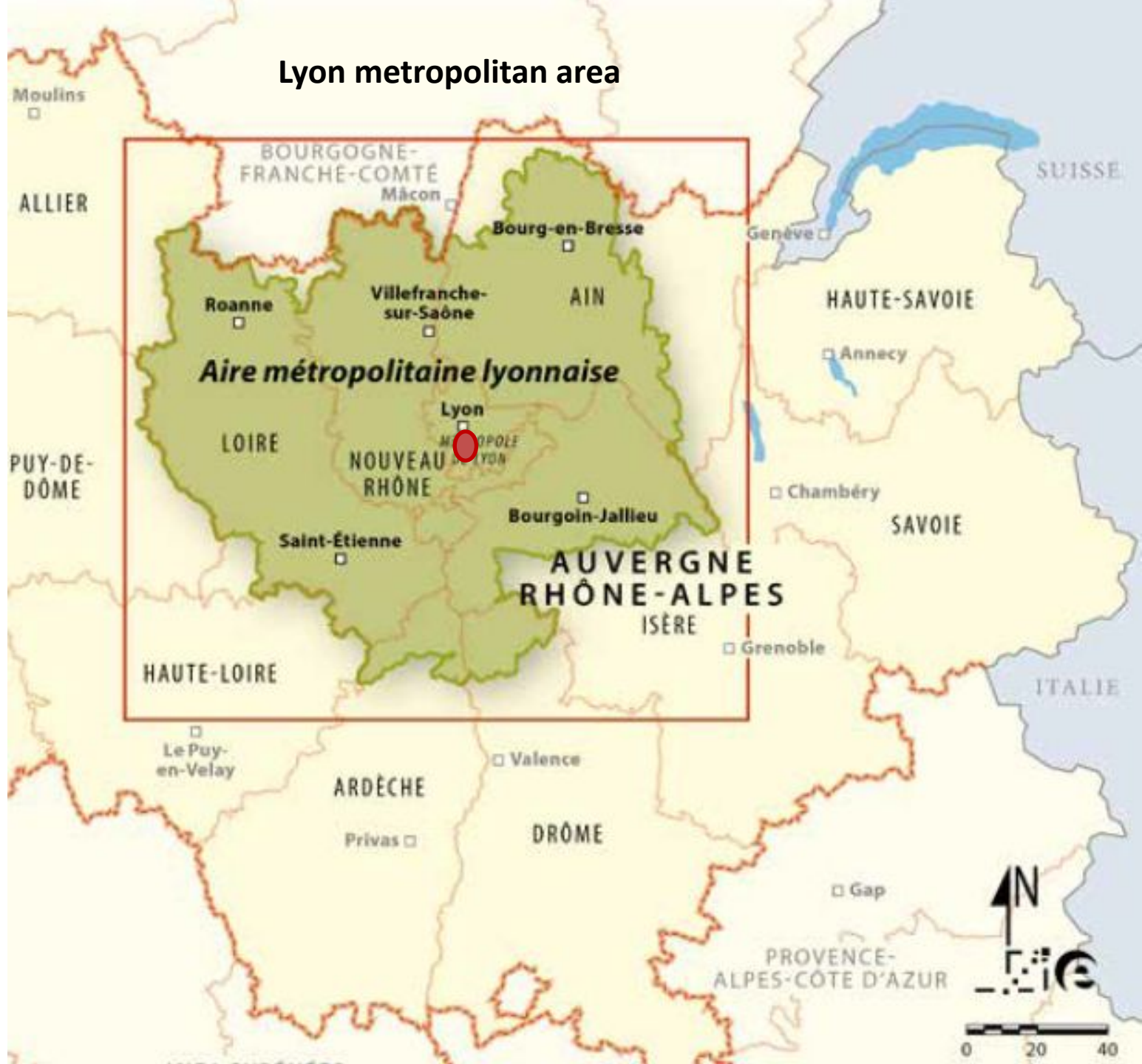
Auvergne Rhône-Alpes Region

At a larger scale, Urbalyon provide its skills for dialogue among stakeholders.

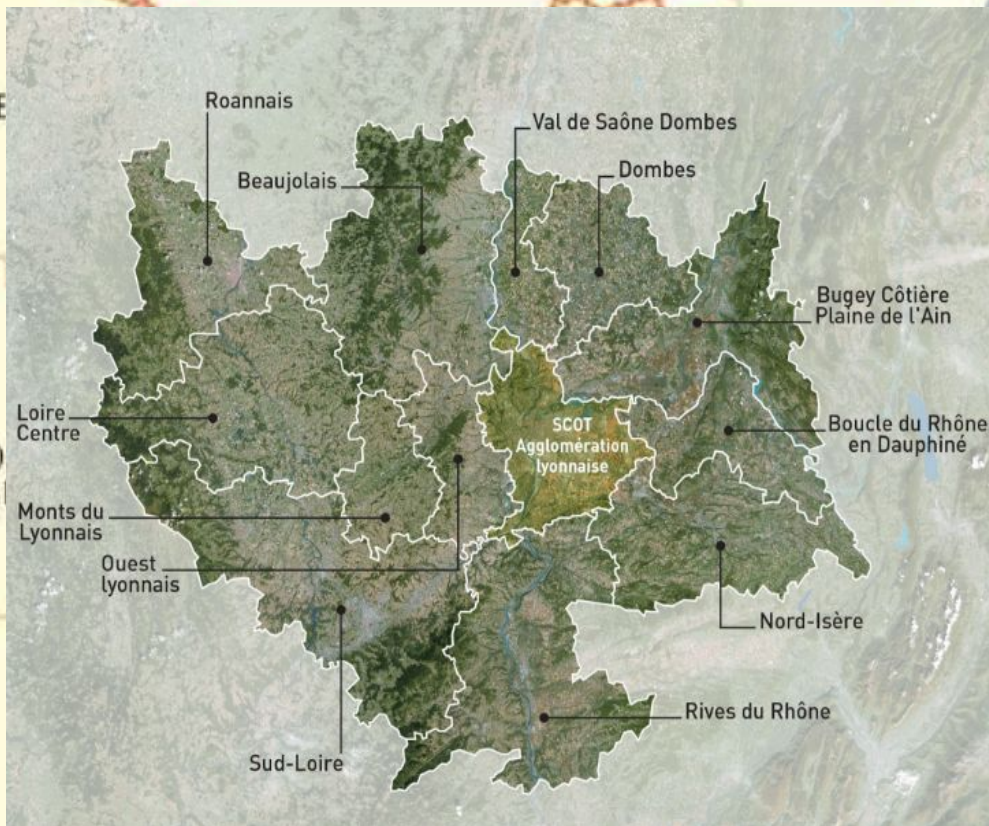
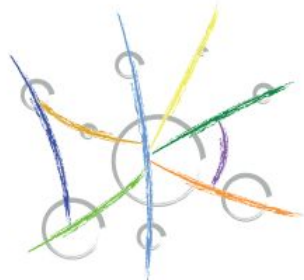




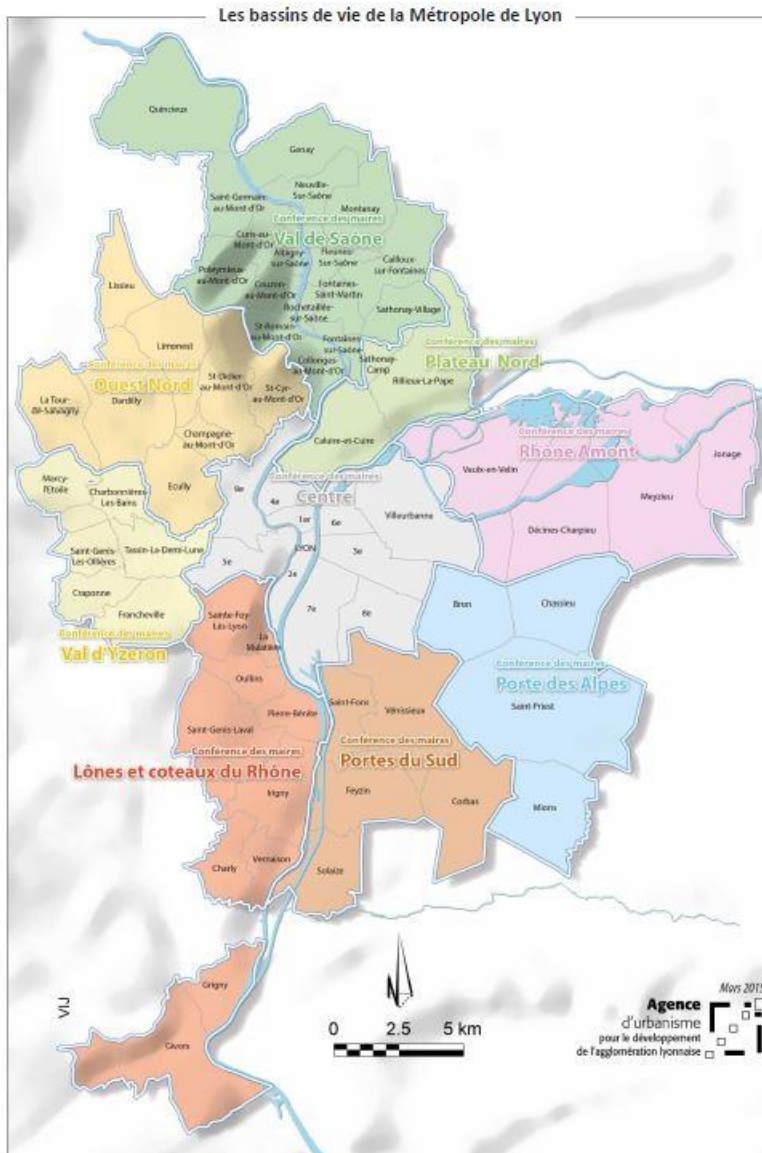
Lyon metropolitan area



-Strategic master planning - Territorial Coherence Scheme - SCOT Lyon metropolitan area



Lyon Metropole area



LYON MÉTROPOLE

59 MUNICIPALITIES

+ 1.3 MILLION INHABITANTS **+ 5%** IN 5 YEARS

I.E. **17%** OF THE POPULATION OF THE AUVERGNE - RHÔNE-ALPES REGION

Source: INSEE 2014

9,200 EMPLOYEES (31/12/2016)



BUDGET 2017
€ 3.19 B

A GDP OF
€ 74.6 B

Source: Lyon, Financial and Service Sector Location 2015

€ 3.5 B CAPITAL
EXPENDITURE 2015 - 2020

€ 11 B
TRANSFERS OF REVENUE TO THE TERRITORIES

Source: Davozies 2016

€ 657 M
STRATEGIC PROJECT FUNDING IN THE CPER-CFAC (Planning agreement between the national and regional governments)

1- The networks of Urban Town planning Agencies

2- Lyon Town planning Agency

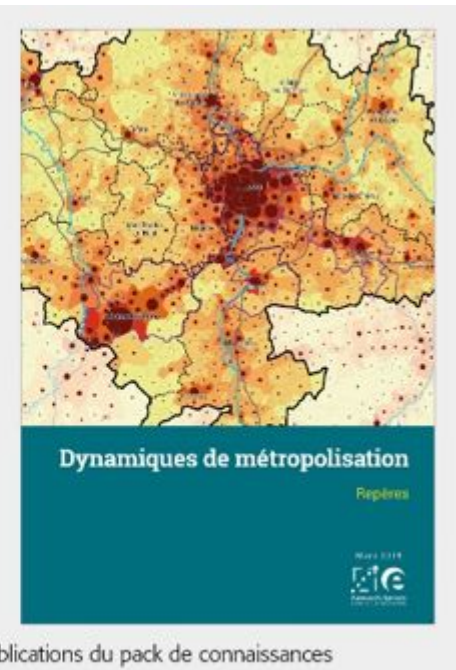
3- The territories of study

4- The main activities of LTPA

- **Master plan and Local plans**
- Urban Project / Urban Quality / Public Spaces
- Observation
- International activities
- Knowledge and Innovation

Metropolitan strategy Planning

Master plan of the Metropole of Lyon plus 17 surrounding cities (SCOT Agglomération lyonnaise)
 Coordination of various regional master plans, Publications



Land use planning & Housing - Mobility Plan

Land use plan for Metropole of LYON (PLU-H), based on scheme for each the 59th municipalities of the Metropole of Lyon

Sustainable urban mobility Plan (PDU)

They must be compatible with the guidelines as defined by the territorial coherence scheme (SCOT)

révision du PLU-H* de la Métropole de Lyon

*projet d'Aménagement et de Développement Durable, premiers contours de projet



Le PLU-H de la Métropole de Lyon,

compatible avec le Schéma de cohérence territoriale ...



... intègre le Plan local de l'habitat (PLH)



... et s'articule avec le Plan des déplacements urbains (PDU)



1- The networks of Urban Town planning Agencies

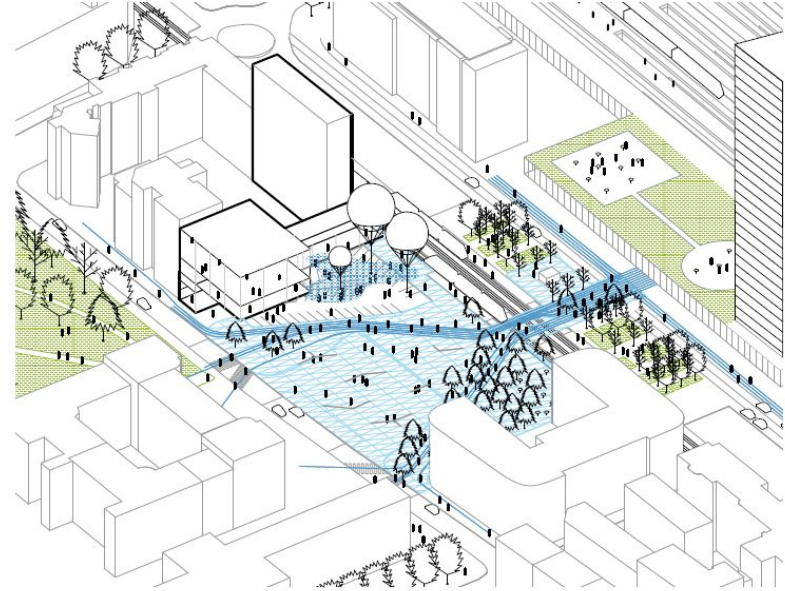
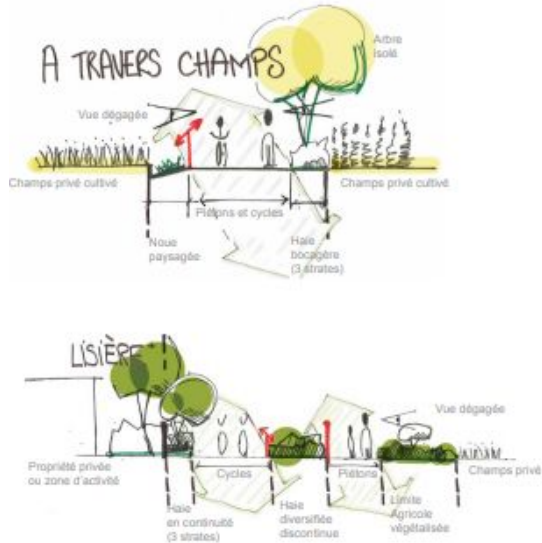
2- Lyon Town planning Agency

3- The territories of study

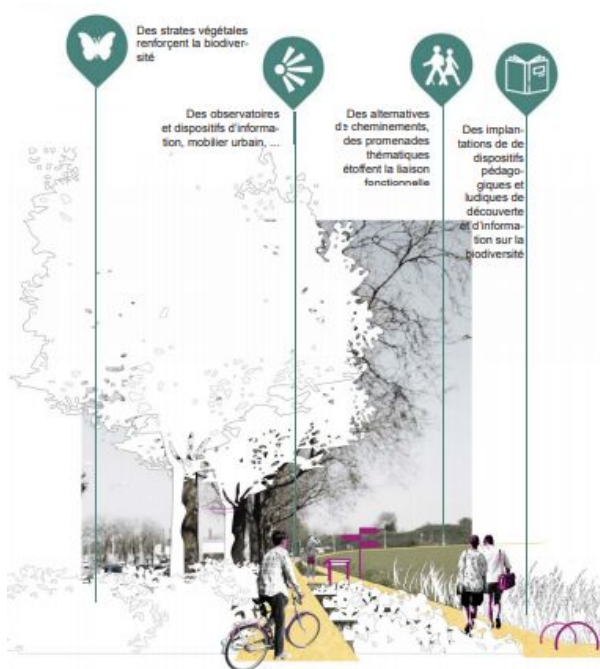
4- The main activities of LTPA

- Master plan and Local plans
- **Urban Project / Urban Quality / Public Spaces**
- Observation
- International activities
- Knowledge and Innovation

Urban Project / Urban Quality / Public Spaces



Principe d'aménagement pour la place de Francfort (à terme) et son équipement



Lyon Part Dieu- Plan de référence



1- The networks of Urban Town planning Agencies

2- Lyon Town planning Agency

3- The territories of study

4- The main activities of LTPA

- Master plan and Local plans
- Urban Project / Urban Quality / Public Spaces
- **Observation**
- International activities
- Knowledge and Innovation

Main activities : Observation

Knowledge of the city evolution : observation and prospection studies on social, economic and territorial phenomenon...



The observation is a complex and long process based on data, knowledge and analysis.

It is a principal tool for decision, elaboration, assessment of Public policies.



1- The networks of Urban Town planning Agencies

2- Lyon Town planning Agency

3- The territories of study

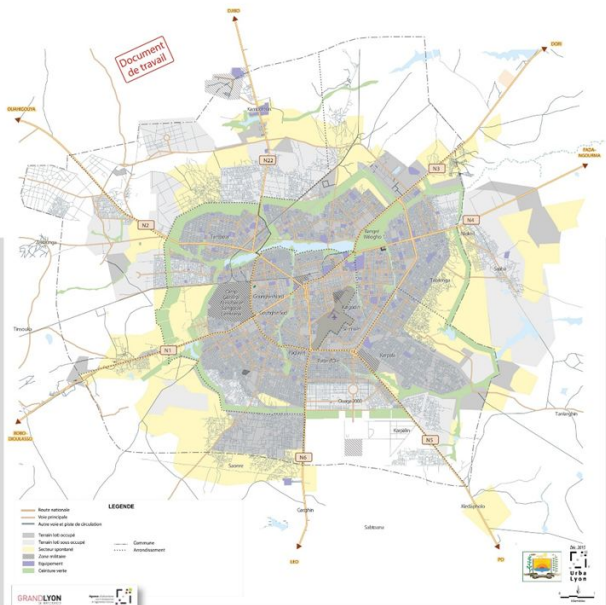
4- The main activities of LTPA

- Master plan and Local plans
- Urban Project / Urban Quality / Public Spaces
- Observation
- **International activities**
- Knowledge and Innovation



International activities

Activités
internationales



Ouagadougou (Burkina Faso)
Face aux enjeux urbains posés dans les villes africaines en pleine explosion démographique (+100 000 habitants par an à Ouagadougou !), l'absence d'un véritable fond de plan actualisé constitue une difficulté majeure, pour la collectivité locale gestionnaire des services urbains, qui peut être résolue par les nouvelles technologies innovantes et interactives.
Le fond de plan proposé a été réalisé par des apports complémentaires respectifs entre les équipes lyonnaises et ouagalaises. En effet, l'Agence d'urbanisme

de Lyon apporte sa technicité à la commune de Ouagadougou, accompagne une démarche de capitalisation des connaissances, alimentées par le réseau collaboratif OpenStreetMap-Burkina (l'équivalent d'un wikipédia cartographique).
Cette carte illustre les résultats de ce travail : surface réelle de la tâche urbaine, localisation des secteurs illégaux... L'implication de l'Agence dans ces démarches innovantes s'inscrit pleinement dans la révolution numérique à l'œuvre, et valorise ces nouveaux outils de connaissance, aussi bien à Ouagadougou qu'à Lyon !



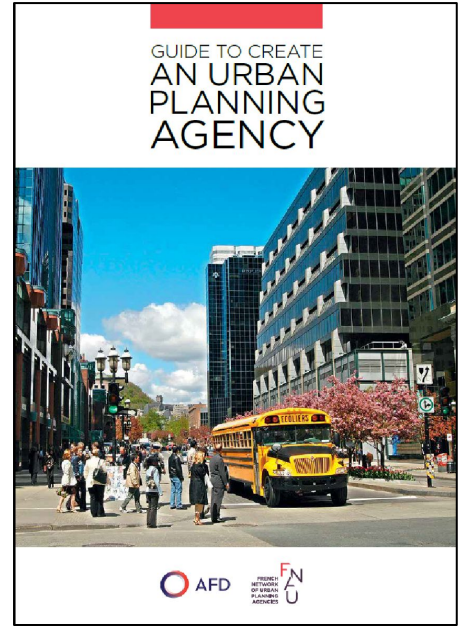
Addis Abeba (Ethiopie)
5 millions d'habitants. Contrat spécifique spécifique Banque Mondiale/Egis International/Agence d'urbanisme de Lyon - Vue 3D du projet de l'un des 3 futurs centres secondaires du nouveau master plan



Kochi (Inde), 2 millions d'habitants. Illustration d'une proposition de semi-piétonisation de la grande rue commerciale de 1,8 km où va rouler le métro aérien - photo : réunion à Kochi en réunion



Sétif (Algérie), environ 1,6 millions d'habitants, située dans la zone des hauts plateaux entre Alger et Constantine, composée de 60 communes. «Formations sur le projet urbain» © P. BILLY



Les activités internationales de l'Agence d'urbanisme de l'aire métropolitaine lyonnaise : 20 villes de 200 000 à 8 millions d'habitants sur 8 continents

The international Activities of the Lyon Town Planning Agency : with 20 major Cities from 200,000 to 7 million inhabitants on 4 continents

- Coopération passée
Past cooperation
- Coopération active
Current cooperation

COOPERATION DECENTRALISEE
SAINT-LOUIS, Missouri
(0,35 M. hab.)
2007. Politique de la ville

CITY TO CITY COOPERATION
SAINT-LOUIS, Missouri
(Pop. 0.35 million)
2007. Urban and social development

COOPERATION BILATERALE
SAN SALVADOR, El Salvador
(1,5 M. hab.)
2000 - 2005. Gouvernance urbaine et planification territoriale

BILATERAL COOPERATION
SAN SALVADOR, El Salvador
(Pop. 1.5 millions)
2000-2005. Governance and Planning

COOPERATION BILATERALE
SAN JOSÉ, Costa Rica
(3 M. hab.) 2000 - 2005.
Gouvernance urbaine, planification territoriale et plan lumière

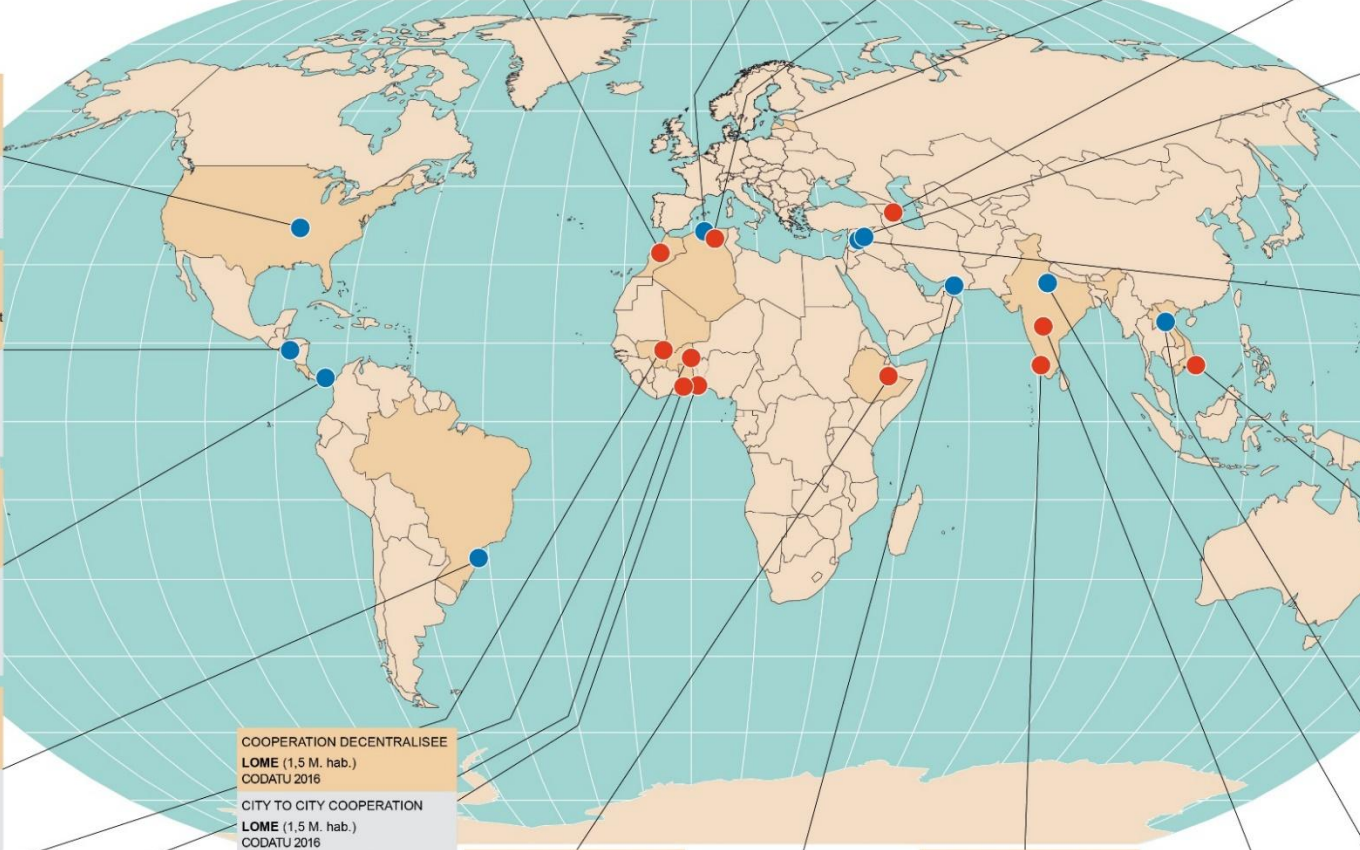
BILATERAL COOPERATION
SAN JOSE, Costa Rica
(Pop. 3 millions)
2000-2005. Governance, Planning and Public lighting plan

COOPERATION DECENTRALISEE
CURITIBA, Brésil (2 M. hab.)
Depuis 2010. Valorisation du centre ville (avec IPPUC)

CITY TO CITY COOPERATION
CURITIBA, Brazil (Pop. 2 millions)
Since 2010. City center revitalisation (with IPPUC)

COOPERATION DECENTRALISEE
BAMAKO, Mali
(1,8 M. hab.)
Depuis 2008. Planification
Création Agence d'urbanisme

CITY TO CITY COOPERATION
BAMAKO, Mali
(Pop. 1.8 million)
Since 2008. Planning
Creation of Urban Planning Agency



COOP. DECENTRALISEE / CONTRAT
RABAT, Maroc (1,6 M. hab.)
Depuis 2007. Intercommunalité, transports urbains, environnement et urbanisme

CITY TO CITY COOP./CONTRACT
RABAT, Morocco (Pop. 1.6 millions)
Since 2007. Greater urban Area coordination, Urban Transportation, Planning and environment

COOPERATION DECENTRALISEE
ALGER, Algérie
(3,8 M. hab.)
2004-2007. Plan lumière, valorisation de la Casbah d'Alger

CITY TO CITY COOPERATION
ALGER, Algeria
(Pop. 3.8 millions)
2004-2007. Restoration and lighting Plan for the Kasbah

COOPERATION DECENTRALISEE
SÉTIF, Algérie
(0,3 M. hab.)
Depuis 2010.
Planification, Agence d'urbanisme

CITY TO CITY COOPERATION
SÉTIF, Algeria
(Pop. 0.3 million)
Since 2010.
Planification, Planning Agency

COOPERATION DECENTRALISEE
RIGA, Lettonie
(0,8 M. hab.) 2008-2009
Protection et valorisation du patrimoine

CITY TO CITY COOPERATION
RIGA, Latvia
(Pop. 0.8 million)
2008-2009
Heritage Restoration

COOPERATION DECENTRALISEE
EREVAN, Arménie
(1,2 M. hab.)
Depuis 2011. Valorisation du centre ville

CITY TO CITY COOPERATION
YEREVAN, Armenia
(Pop. 1.2 millions)
Since 2011.
City Center valorisation

COOPERATION DECENTRALISEE
ALEP, Syrie
(2,2 M. hab.)
Depuis 2005. Planification, quartiers informels, transports urbains

CITY TO CITY COOPERATION
ALEPPO, Syria
(Pop. 2.2 millions)
Since 2005. Planning, Rehabilitation of informally developed Districts and Urban transportation

COOPERATION DECENTRALISEE
TRIPOLI, Liban
(0,2 M. hab.)
Depuis 2008. Tourisme et culture
Stratégie de développement urbain

CITY TO CITY COOPERATION
TRIPOLI, Lebanon
(Pop. 0.2 million)
Since 2008. Tourism and culture
City Development Strategies

COOPERATION MULTILATERALE, DECENTRALISEE / CONTRAT
HÔ CHI MINH-VILLE, Vietnam
(8 M. hab.) Depuis 1991. Planification, patrimoine, grands projets urbains.

MULTILATERAL and CITY TO CITY COOPERATION / CONTRACT
HO CHI MINH CITY, Vietnam
(Pop. 8 millions)
Since 1991. Planning, Heritage and major urban Projects

COOPERATION DECENTRALISEE
VIENTIANE, Laos
(0,8 M. hab.) Depuis 2013.
Développement urbain et réseau de lignes fortes de transport en commun

CITY TO CITY COOPERATION
VIENTIANE, Laos
(Pop. 0,8 million)
Since 2013. Urban development connected to a strong backbone network of public transport

COOPERATION DECENTRALISEE
LOME (1,5 M. hab.)
CODATU 2016

CITY TO CITY COOPERATION
LOME (1,5 M. hab.)
CODATU 2016

COOPERATION DECENTRALISEE ET BILATERALE / CONTRAT
ADDIS ABABA, Ethiopie
(3,5 M. hab.) Depuis 2000.
Révision du Schéma directeur et mise en œuvre tous sujets.

BILATERAL CITY TO CITY COOPERATION / CONTRACT
ADDIS ABABA, Ethiopia
(Pop. 3.5 millions)
Since 2000. Updating the Master Plan and Implementation on all issues

CONTRAT
DUBAÏ (1,2 M. hab.)
2008-2009, AMO de la société EMIVEST, et Partenaires Développement, promoteurs du projet Lyon-Dubai city.

CONTRACT
DUBAI (Pop. 1,2 million)
2008-2009, consultancy for EMIVEST and Partenaires Développement, developer of the Lyon-Dubai City project

COOPERATION DECENTRALISEE
KOCHI, Inde (état de Kerala)
(1,8 M. hab.)
Développement de projets urbains aux stations majeures du nouveau métro

CITY TO CITY COOPERATION
KOCHI, India (state of Kerala)
(Pop. 1.8 million)
Development of urban projects around major subway stations

CONTRAT
NAGPUR, Inde (état de Maharashtra)
(2,5 M. hab.)
Smart city

CONTRACT
NAGPUR, Inde (state of Maharashtra)
(Pop. 2.5 M. hab.)
Smart city

COOPERATION MULTILATERALE
JAIPUR, Inde (capitale de Rajasthan)
(2 M. hab.)
2001 - 2004. Valorisation de la vieille ville de Jaipur.

MULTILATERAL COOPERATION
JAIPUR, India
(Pop. 2 millions)
2001-2004. Protection and Enhancement of the old City

1- The networks of Urban Town planning Agencies

2- Lyon Town planning Agency

3- The territories of study

4- The main activities of LTPA

- Master plan and Local plans
- Urban Project / Urban Quality / Public Spaces
- Observation
- International activities
- **Knowledge and Innovation**

Communication and Knowledge sharing - Innovation

Professional meetings, network, TV Web, publications...

Exchange with other European cities, study visits, exploration of emerging issues

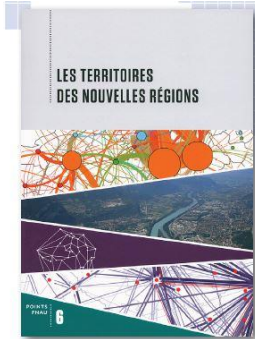
Publications



Point Fnau, l'expérience métropolitaine lyonnaise en collaboration avec l'IFSTAR



Posters de l'aire métropolitaine, en collaboration avec Epures



Opportunities for dialogue



To conclude

